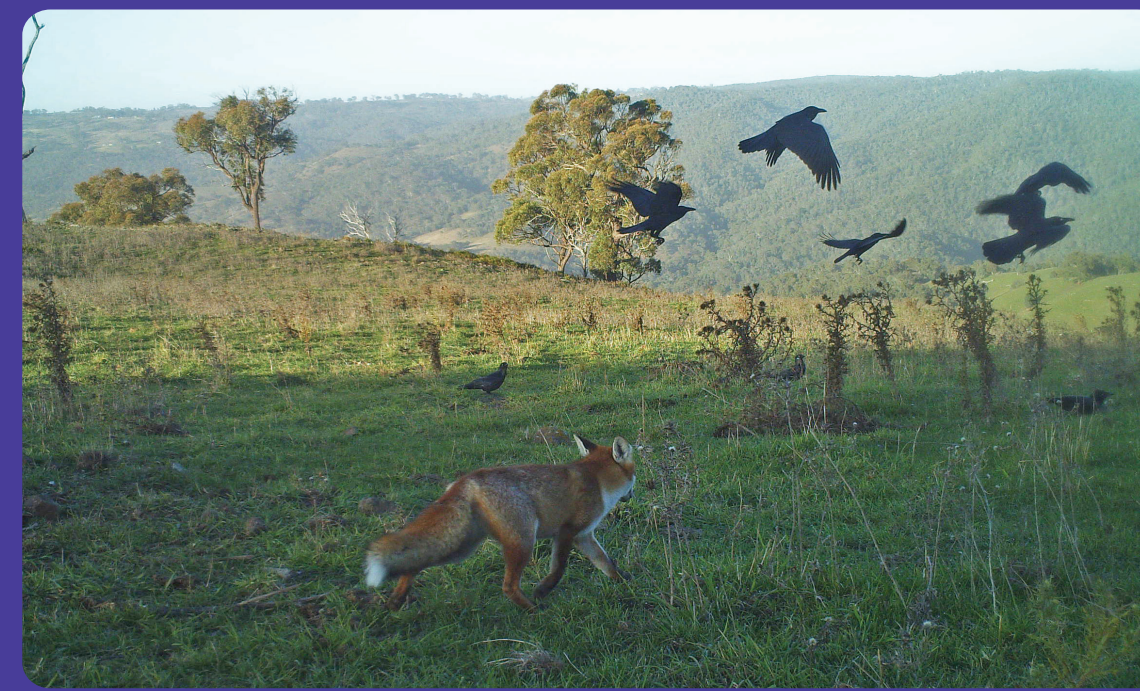
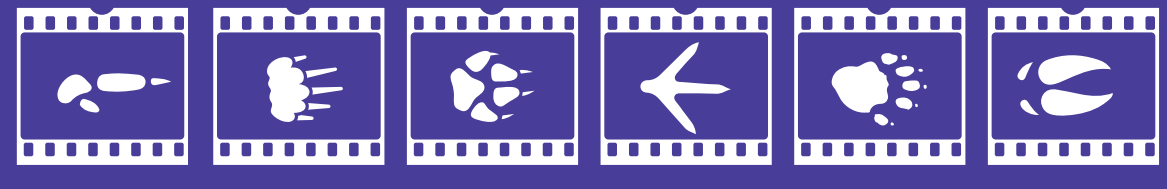


# Who's living on my land?



## Landholders ask: "Who's living on my land?"

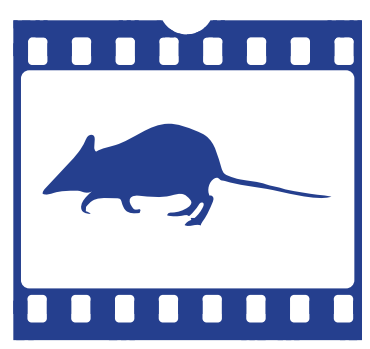
**Engaging Private Landholders with Nature:** NPA's citizen science project helps private landholders answer the question "Who's living on my land?" by loaning out infrared cameras and providing them with skills to conduct wildlife surveys on their property.



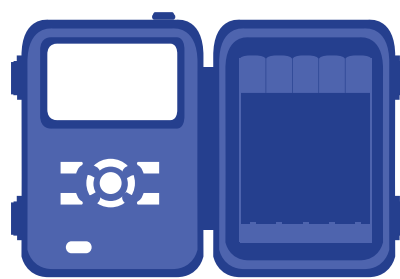
“ I felt like dancing especially when I saw the photographs of what else was snapped nearby. But that bloody feral cat has to go. ”

– Penrose workshop participant, 2016.

### A picture says a thousand words



**Cameras** are a valuable tool for community engagement in regions where there is low participation with conservation initiatives.



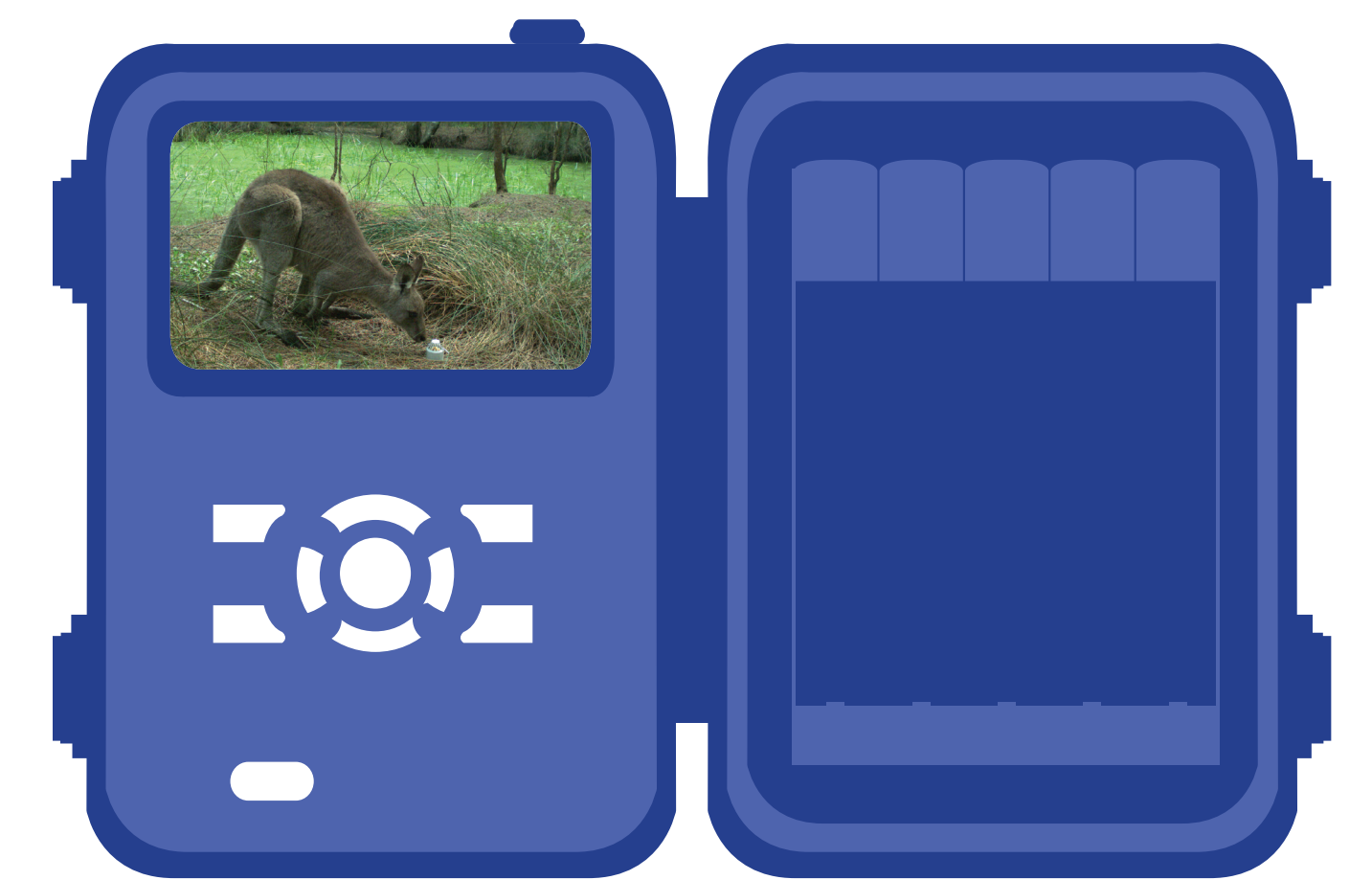
**Photographs** are great tools for species identification and for creating a sense of custodianship.



**Participants** are encouraged to take conservation action using the species data found in the citizen science survey, improving habitat and pest control.



**20%** of landholders have not participated in environmental projects before, for example, farming and absentee landholders.



### Why private landholders?

- 80% of Australia is private land, providing crucial connections between the national reserve system
- Adds valuable species records to public databases from under-surveyed private land
- Complements survey work done on public land

**500+** private landholders

**35** workshops since 2013

**500,000+** images of native and pest species

**4,500ha** of private property joining 'Land for Wildlife'

“ I thought I was finished getting excited about Landcare. ”

– Braidwood workshop participant, 2017.



## Get Involved

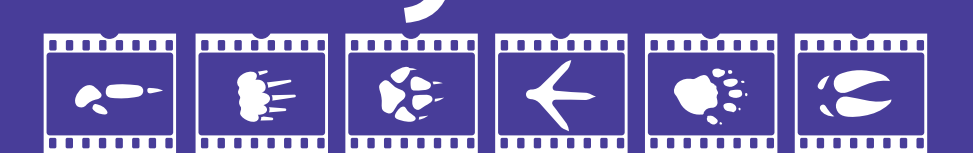
Want to help landholders in your region find out who's living on their land?

Contact us to arrange a workshop

[margotl@npansw.org.au](mailto:margotl@npansw.org.au)  
or (02) 9299 0000

[www.whoslivingonmyland.org](http://www.whoslivingonmyland.org)

## Who's living on my land?



NATIONAL PARKS ASSOCIATION OF NSW  
protecting nature through community action